

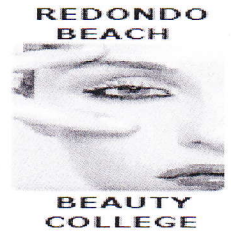
REDONDO BEACH BEAUTY COLLEGE

2205 W. ARTESIA BOULEVARD

REDONDO BEACH, CA 90278

Phone: (310) 370-7464 Fax: (310) 370-8227

www.rbbeautycollege.com



SCHOOL PERFORMANCE FACT SHEET

Calendar Years 2016 & 2017

PROGRAM NAME: ADVANCED MANICURING PROGRAM LENGTH: 600 hours 10-20 Weeks

On-Time Completion Rates: (Graduation Rates)

Calendar Year	Number of Students Who Began Program	Students Available for Graduation	Number of on-time Graduates	On-time Completion Rate
**2016	3	3	3	100%
**2017	20	20	14	70%

Student's Initials: _____ Date: _____

Initial only after you have had sufficient time to read and understand the information.

150% TABLE OPTIONAL (Program less than one year)

Students Completing After Published Program Length - 150% completion Rate (101-150%)

Calendar Year	Number of Students Who Began Program	Students Available for Graduation	150% Graduates	150% Completion Rate
**2016	N/A	N/A	N/A	N/A
**2017	20	20	N/A	N/A

** Included if the program is more than one year in length.

Student's Initials: _____ Date: _____

Initial only after you have had sufficient time to read and understand the information.

REDONDO BEACH BEAUTY COLLEGE

2205 W. ARTESIA BOULEVARD

REDONDO BEACH, CA 90278

Phone: (310) 370-7464 Fax: (310) 370-8227

www.rbbeautycollege.com



Job Placement Rates (includes data for the two calendar years prior to reporting)

Calendar Year	Number of Student Who Began Program	Number of Graduate	Graduates Available for Employment	Graduates Employed in the Field	Placement Rate Employed in the Field
**2016	3	3	3	2	67%
**2017	20	14	14	13	92.86%

You may obtain from the institution a list of the employment positions determined to be in the field for which a student received education and training. **Please see below**

39-5092 Manicurists and Pedicurists: *Clean and shape customers' fingernails and toenails. May polish or decorate nails.*

First Quarter of 2017	Median Hourly	Median Annually
Los Angeles	\$11.41	\$23,748.00

The US Department of Labor, Bureau of Statistics has provided us with the salary/wage information of persons employed in our programs.

You may obtain a list of the employment positions determined to be within the field that the education received in this program will prepare you for, a list of the source of information used to substantiate the above salary disclosure, and a description of the manner in which the figures provided above have been calculated from the Admissions & Placement Office or visit www.labormarketinfo.edd.ca.gov

Gainful Employment Categories (includes data for the two calendar years prior to reporting)

Part Time vs. Full Time Employment

Calendar Year	"Part-Time" Graduates Employed in the field 20 to 29 hours per week	"Full-Time" Graduates Employed in at least 30 hours per week	Total Graduates Employed in the Field
**2016	2	N/A	2
**2017	9	4	13

Student's Initials: _____

Date: _____

Initial only after you have had sufficient time to read and understand the information.

REDONDO BEACH BEAUTY COLLEGE
 2205 W. ARTESIA BOULEVARD
 REDONDO BEACH, CA 90278
 Phone: (310) 370-7464 Fax: (310) 370-8227
 www.rbbeautycollege.com



Single Position vs. Concurrent Aggregated Positions

Calendar Year	Graduates Employed in the field in the single position	Graduates Employed in the field in concurrent aggregated positions	Total Graduates Employed in the Field
**2016	2	N/A	2
**2017	13	N/A	13

Self-Employed/Freelance Positions

Calendar Year	Graduates Employed who are self-employed or working freelance	Total Graduates Employed in the Field
**2016	N/A	N/A
**2017	N/A	N/A

Institutional Employment

Calendar Year	Graduates Employed in the field who are employed by the institution, an employer owned by the institution, or an employer who shares ownership with the institution	Total Graduates Employed in the Field
**2016	N/A	N/A
**2017	N/A	N/A

Student's Initials: _____ Date: _____

Initial only after you have had sufficient time to read and understand the information.

IF the majority of graduates from this program obtain jobs in self-employment or freelance work add:
 This program may result in freelance or self-employment.

- The work available to graduates of this program is usually for freelance or self-employment.
- This type of work may not be consistent.
- The period of employment can range from one day to weeks to several months.
- Hours worked in a day or week may be more or less than the traditional 8 hour work day or 40 hour work week.
- You can expect to spend unpaid time expanding your networks, advertising, promoting your services, or honing your skills.
- Once graduates begin to work freelance or are self-employed, they will be asked to provide documentation that they are employed as such so that they may be counted as placed for our job placement records.
- Students initialing this disclosure understand that either a majority or all of this school's graduates are employed in this manner and understand what comprises this work style.

Student's Initials: _____ Date: _____

Only initial after you have had sufficient time to read and understand the information.

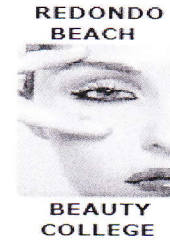
REDONDO BEACH BEAUTY COLLEGE

2205 W. ARTESIA BOULEVARD

REDONDO BEACH, CA 90278

Phone: (310) 370-7464 Fax: (310) 370-8227

www.rbbeautycollege.com



License Examination Passage Rates (includes data for the two calendar years prior to reporting)

Calendar Year	Number of Graduates in Calendar Year	Number of Graduates Taking Exam	Number Who Passed First Available Exam	Number Who Failed First Available Exam	Passage Rate
**2016	3	2	2	N/A	100%
**2017	14	14	11	3	79%

Licensure examination passage data is available from the state agency administering the examination and also in student's file.

Student's Initials: _____ Date: _____

Initial only after you have had sufficient time to read and understand the information

Salary and Wage Information(includes data for the two calendar years prior to reporting)

Annual Salary and Wages Reported for Graduates Employed in the Field

Calendar Year	Graduates Available for Employment	Graduates Employed in Field	\$15,000-\$20,000	\$20,001-\$25,000	\$25,001-\$30,000	\$30,001-\$35,001	No Salary Information Reported
**2016	3	2	N/A	N/A	N/A	N/A	N/A
**2017	14	13	13	N/A	N/A	N/A	N/A

A list of sources used to substantiate salary disclosures is available from the school. (Insert how student can obtain this information.)

Student's Initials: _____ Date: _____

Initial only after you have had sufficient time to read and understand the information.

Cost of Educational Program

Total charges for the program for students completing on-time in 2017: **\$3,850.00** Additional charges may be incurred if the program is not completed on-time.

Student's Initials: _____ Date: _____

Initial only after you have had sufficient time to read and understand the information.

REDONDO BEACH BEAUTY COLLEGE

2205 W. ARTESIA BOULEVARD

REDONDO BEACH, CA 90278

Phone: (310) 370-7464 Fax: (310) 370-8227

www.rbbeautycollege.com



Federal Student Loan Debt

(A) Most recent three year cohort default rate, as reported by the United State Department of Education.1 School Default Rate FY 2014, 2013, and 2012 <small>Print from nslds.ed.gov 10/23/2018</small>	The percentage of enrolled students in 2017 receiving federal student loans to pay for this program.	© The average amount of federal student loan debt of 2017 graduates who took out federal student loans at this institution.	(D) The percentage of graduates in 2017 who took out federal student loans to pay for this Education Program.
N/A	N/A	N/A	N/A

The percentage of students who defaulted on their federal student loans is called the Cohort Default Rate (CDR). It shows the percentage of this school's students who were more than 270 days (9 months) behind on their federal student loans within three years of when the first payment was due. This is the most recent CDR reported by the U.S. Department of Education.

Student's Initials: _____ **Date:** _____

Initial only after you have had sufficient time to read and understand the information.

This fact sheet is filed with the Bureau for Private Postsecondary Education. Regardless of any information you may have relating to completion rates, placement rates, starting salaries, or license exam passage rates, this fact sheet contains the information as calculated pursuant to state law.

Any questions a student may have regarding this fact sheet that have not been satisfactorily answered by the institution may be directed to the Bureau for Private Postsecondary Education at 2535 Capitol Oaks Drive, Suite 400, Sacramento, CA 95833, www.bppe.ca.gov, toll-free telephone number (888) 370-7589 or by fax (916) 263-1897.

Student Name-Print

Student Signature

Date

School Official

Date

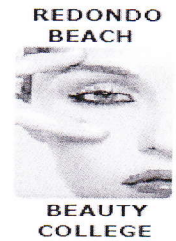
REDONDO BEACH BEAUTY COLLEGE

2205 W. ARTESIA BOULEVARD

REDONDO BEACH, CA 90278

Phone: (310) 370-7464 Fax: (310) 370-8227

www.rbbeautycollege.com



Definitions

- “Number of Students Who Began the Program” means the number of students who began a program who were scheduled to complete the program within 100% of the published program length within the reporting calendar year and excludes all students who cancelled during the cancellation period.
- “Students Available for Graduation” is the number of students who began the program minus the number of students who have died, been incarcerated, or been called to active military duty.
- “Number of On-time Graduates” is the number of students who completed the program within 100% of the published program length within the reporting calendar year.
- “On-time Completion Rate” is the number of on-time graduates divided by the number of students available for graduation.
- “150% Graduates” is the number of students who completed the program within 150% of the program length (includes on-time graduates).
- “150% Completion Rate” is the number of students who completed the program in the reported calendar year within 150% of the published program length, including on-time graduates, divided by the number of students available for graduation.
- “Graduates Available for Employment” means the number of graduates minus the number of graduates unavailable for employment.
- “Graduates Unavailable for Employment” means the graduate who, after graduation, dies, become incarcerated, are called to active military duty, are international students that leave the United States or do not have a visa allowing employment in the United States, or are continuing their education in an accredited or bureau-approved postsecondary institution.
- “Graduates employed in the Field” means a graduate who beginning within six months after a student completes the applicable educational program are gainfully employed, whose employment has been reported, and for whom the institution has documented verification of employment. For occupations for which the state requires passing an examination, the six months period begins after the announcement of the examination results for the first examination available after a student completes an applicable educational program.
- “Placement Rate Employed in the Field” is calculated by dividing the number of graduates gainfully employed in the field by the number of graduates available for employment.
- “Number of Graduates Taking Exam” is the number of graduates who took the first available exam in the reported calendar year.
- “First Available Exam Date” is the date for the first available exam after a student completed a program.
- “Passage Rate” is calculated by dividing the number of graduates who passed the exam by the number of graduates who took the reported licensing exam.
- “Number Who Passed First Available Exam” is the number of graduates who took and passed the first available licensing exam after completing the program.
- “Salary” is as reported by graduate or graduate’s employer.
- “No Salary Information Reported” is the number of graduates for whom, after making reasonable attempts, the school was not able to obtain salary information.

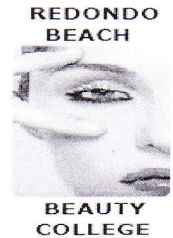
REDONDO BEACH BEAUTY COLLEGE

2205 W. ARTESIA BOULEVARD

REDONDO BEACH, CA 90278

Phone: (310) 370-7464 Fax: (310) 370-8227

www.rbbeautycollege.com



STUDENT'S RIGHT TO CANCEL

The student has the right to cancel the enrollment agreement and obtain a full refund of charges paid, less a reasonable deposit or registration fee not to exceed one hundred fifty dollars (\$150), if notice of cancellation is made through attendance at the first class session (**first day of class to “fifth classes days”, or the seven days after enrollment was signed**), whichever is later.

To obtain a refund, the student must provide a written notice to:

Redondo Beach Beauty College

2205 W. Artesia Blvd

Redondo Beach, CA 90278

Phone (310)370-7464

Fax (310)370-8227

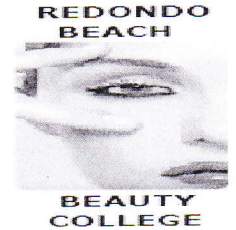
Email: rbbeautycollege@yahoo.com

If the institution gave the student any equipment, the student shall return the equipments within 30 days following the date of the Notice of Cancellation. If the student fails to return the equipment within this 30 day-period, the institution may retain that portion of the consideration paid by the student equal to the documented cost to the institution of the equipment and shall refund the portion of the consideration exceeding the documented cost to the institution of the equipment within 10 days after the period within which the student is required to return the equipment. The student may retain the equipment without further obligation to pay for it.

Student's Initials: _____ Date: _____

Initial only after you have had sufficient time to read and understand the information

REDONDO BEACH BEAUTY COLLEGE
 2205 W. ARTESIA BOULEVARD
 REDONDO BEACH, CA 90278
 Phone: (310) 370-7464 Fax: (310) 370-8227
 www.rbbeautycollege.com



SCHOOL PERFORMANCE FACT SHEET
Calendar Years 2016 & 2017

PROGRAM NAME: BARBERING PROGRAM LENGTH: 1600 hours 47-75 Weeks

On-Time Completion Rates: (Graduation Rates)

Includes data for the two calendar years prior to reporting

Calendar Year	Number of Students Who Began Program	Students Available for Graduation	Number of on-time Graduates	On-time Completion Rate
**2016	N/A	N/A	N/A	N/A
**2017	N/A	N/A	N/A	N/A

Student's Initials: _____ Date: _____
 Initial only after you have had sufficient time to read and understand the information.

150% TABLE OPTIONAL (Program less than one year)

Students Completing After within 150% of Published Program Length

Calendar Year	Number of Students Who Began Program	Students Available for Graduation	150% Graduates	150% Completion Rate
**2016	N/A	N/A	N/A	N/A
**2017	N/A	N/A	N/A	N/A

** Included if the program is more than one year in length.

Student's Initials: _____ Date: _____
 Initial only after you have had sufficient time to read and understand the information.

REDONDO BEACH BEAUTY COLLEGE
 2205 W. ARTESIA BOULEVARD
 REDONDO BEACH, CA 90278
 Phone: (310) 370-7464 Fax: (310) 370-8227
 www.rbbeautycollege.com



Job Placement Rates (includes data for the two calendar years prior to reporting)

Calendar Year	Number of Student Who Began Program	Number of Graduate	Graduates Available for Employment	Graduates Employed in the Field	Placement Rate Employed in the Field
**2016	N/A	N/A	N/A	N/A	N/A
**2017	N/A	N/A	N/A	N/A	N/A

You may obtain from the institution a list of the employment positions determined to be in the field for which a student received education and training. **Please see below:**

39.5011 Barber Provide barbering services, such as cutting, trimming, shampooing, and styling hair, trimming beards, or giving shaves.

Annual Wages for 2016	Median Hourly	Median Annually
Los Angeles	\$27.53	\$57,258

The US Department of Labor, Bureau of Statistics has provided us with the salary/wage information or persons employed in our programs.

You may obtain a list of the employment positions determined to be within the field that the education received in this program will prepare you for, a list of the source of information used to substantiate the above salary disclosure, and a description of the manner in which the figures provided above have been calculated from the Admissions & Placement Office or visit www.labormarketinfo.edd.ca.gov

Gainful Employment Categories (includes data for the two calendar years prior to reporting)
Part Time vs. Full Time Employment

Calendar Year	"Part-Time" Graduates Employed in the field 20 to 29 hours per week	"Full-Time" Graduates Employed in at least 30 hours per week	Total Graduates Employed in the Field
**2016	N/A	N/A	N/A
**2017	N/A	N/A	N/A

Student's Initials: _____ Date: _____
 Initial only after you have had sufficient time to read and understand the information.

REDONDO BEACH BEAUTY COLLEGE
 2205 W. ARTESIA BOULEVARD
 REDONDO BEACH, CA 90278
 Phone: (310) 370-7464 Fax: (310) 370-8227
 www.rbbeautycollege.com



Single Position vs. Concurrent Aggregated Positions

Calendar Year	Graduates Employed in the field in the single position	Graduates Employed in the field in concurrent aggregated positions	Total Graduates Employed in the Field
**2016	N/A	N/A	N/A
**2017	N/A	N/A	N/A

Self-Employed/Freelance Positions

Calendar Year	Graduates Employed who are self-employed or working freelance	Total Graduates Employed in the Field
**2016	N/A	N/A
**2017	N/A	N/A

Institutional Employment

Calendar Year	Graduates Employed in the field who are employed by the institution, an employer owned by the institution, or an employer who shares ownership with the institution	Total Graduates Employed in the Field
**2016	N/A	N/A
**2017	N/A	N/A

Student's Initials: _____ Date: _____

Initial only after you have had sufficient time to read and understand the information.

IF the majority of graduates from this program obtain jobs in self-employment or freelance work add:

This program may result in freelance or self-employment.

- the work available to graduates of this program is usually for freelance or self-employment.
- This type of work may not be consistent.
- The period of employment can range from one day to weeks to several months.
- Hours worked in a day or week may be more or less than the traditional 8 hour work day or 40 hour work week.
- You can expect to spend unpaid time expanding your networks, advertising, promoting your services, or honing your skills.
- Once graduates begin to work freelance or are self-employed, they will be asked to provide documentation that they are employed as such so that they may be counted as placed for our job placement records.
- Students initialing this disclosure understand that either a majority or all of this school's graduates are employed in this manner and understand what comprises this work style.

Student's Initials: _____ Date: _____

Only initial after you have had sufficient time to read and understand the information.

REDONDO BEACH BEAUTY COLLEGE
 2205 W. ARTESIA BOULEVARD
 REDONDO BEACH, CA 90278
 Phone: (310) 370-7464 Fax: (310) 370-8227
 www.rbbeautycollege.com



License Examination Passage Rates (includes data for the two calendar years prior to reporting)

Calendar Year	Number of Graduates in Calendar Year	Number of Graduates Taking Exam	Number Who Passed First Available Exam	Number Who Failed First Available Exam	Passage Rate
**2016	N/A	N/A	N/A	N/A	N/A
**2017	N/A	N/A	N/A	N/A	N/A

Licensure examination passage data is available from the state agency administering the examination and also in student's file.

Student's Initials: _____ Date: _____

Initial only after you have had sufficient time to read and understand the information.

Salary and Wage Information (includes data for the two calendar years prior to reporting)

Annual Salary and Wages Reported for Graduates Employed in the Field

Calendar Year	Graduates Available for Employment	Graduates Employed in Field	\$15,000-\$20,000	\$20,001-\$25,000	\$25,001-30,000	\$30,001-\$35,001	No Salary Information Reported
**2016	N/A	N/A	N/A	N/A	N/A	N/A	N/A
**2017	N/A	N/A	N/A	N/A	N/A	N/A	N/A

A list of sources used to substantiate salary disclosures is available from the school. (Insert how student can obtain this information.)

Student's Initials: _____ Date: _____

Initial only after you have had sufficient time to read and understand the information.

Cost of Educational Program

Total charges for the program for students completing on-time in 2017: **\$11,850.00** Additional charges may be incurred if the program is not completed on-time.

Student's Initials: _____ Date: _____

Initial only after you have had sufficient time to read and understand the information.

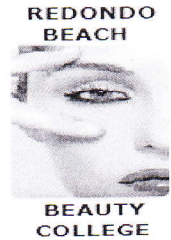
REDONDO BEACH BEAUTY COLLEGE

2205 W. ARTESIA BOULEVARD

REDONDO BEACH, CA 90278

Phone: (310) 370-7464 Fax: (310) 370-8227

www.rbbeautycollege.com



Federal Student Loan Debt

(A) Most recent three year cohort default rate, as reported by the United State Department of Education. School Default Rate FY 2014, 2013, and 2012 <small>Print from nslds.ed.gov 10/23/2018</small>	(B) The percentage of enrolled students in 2017 receiving federal student loans to pay for this program.	© The average amount of federal student loan debt of 2017 graduates who took out federal student loans at this institution.	(D) The percentage of graduates in 2017 who took out federal student loans to pay for this Education. Program.
N/A	N/A	N/A	N/A

The percentage of students who defaulted on their federal student loans is called the Cohort Default Rate (CDR). It shows the percentage of this school's students who were more than 270 days (9 months) behind on their federal student loans within three years of when the first payment was due. This is the most recent CDR reported by the U.S. Department of Education.

Student's Initials: _____ **Date:** _____

Initial only after you have had sufficient time to read and understand the information.

This fact sheet is filed with the Bureau for Private Postsecondary Education. Regardless of any information you may have relating to completion rates, placement rates, starting salaries, or license exam passage rates, this fact sheet contains the information as calculated pursuant to state law.

Any questions a student may have regarding this fact sheet that have not been satisfactorily answered by the institution may be directed to the Bureau for Private Postsecondary Education at 2535 Capitol Oaks Drive, Suite 400, Sacramento, CA 95833, www.bppe.ca.gov, toll-free telephone number (888) 370-7589 or by fax (916) 263-1897.

Student Name-Print

Student Signature

Date

School Official

Date

REDONDO BEACH BEAUTY COLLEGE
2205 W. ARTESIA BOULEVARD
REDONDO BEACH, CA 90278
Phone: (310) 370-7464 Fax: (310) 370-8227
www.rbbeautycollege.com



Definitions

- "Number of Students Who Began the Program" means the number of students who began a program who were scheduled to complete the program within 100% of the published program length within the reporting calendar year and excludes all students who cancelled during the cancellation period.
- "Students Available for Graduation" is the number of students who began the program minus the number of students who have died, been incarcerated, or been called to active military duty.
- "Number of On-time Graduates" is the number of students who completed the program within 100% of the published program length within the reporting calendar year.
- "On-time Completion Rate" is the number of on-time graduates divided by the number of students available for graduation.
- "150% Graduates" is the number of students who completed the program within 150% of the program length (includes on-time graduates).
- "150% Completion Rate" is the number of students who completed the program in the reported calendar year within 150% of the published program length, including on-time graduates, divided by the number of students available for graduation.
- "Graduates Available for Employment" means the number of graduates minus the number of graduates unavailable for employment.
- "Graduates Unavailable for Employment" means the graduate who, after graduation, dies, become incarcerated, are called to active military duty, are international students that leave the United States or do not have a visa allowing employment in the United States, or are continuing their education in an accredited or bureau-approved postsecondary institution.
- "Graduates employed in the Field" means a graduate who beginning within six months after a student completes the applicable educational program are gainfully employed, whose employment has been reported, and for whom the institution has documented verification of employment. For occupations for which the state requires passing an examination, the six months period begins after the announcement of the examination results for the first examination available after a student completes an applicable educational program.
- "Placement Rate Employed in the Field" is calculated by dividing the number of graduates gainfully employed in the field by the number of graduates available for employment.
- "Number of Graduates Taking Exam" is the number of graduates who took the first available exam in the reported calendar year.
- "First Available Exam Date" is the date for the first available exam after a student completed a program.
- "Passage Rate" is calculated by dividing the number of graduates who passed the exam by the number of graduates who took the reported licensing exam.
- "Number Who Passed First Available Exam" is the number of graduates who took and passed the first available licensing exam after completing the program.
- "Salary" is as reported by graduate or graduate's employer.
- "No Salary Information Reported" is the number of graduates for whom, after making reasonable attempts, the school was not able to obtain salary information.

REDONDO BEACH BEAUTY COLLEGE
2205 W. ARTESIA BOULEVARD
REDONDO BEACH, CA 90278
Phone: (310) 370-7464 Fax: (310) 370-8227
www.rbbeautycollege.com



STUDENT'S RIGHT TO CANCEL

The student has the right to cancel the enrollment agreement and obtain a full refund of charges paid, less a reasonable deposit or registration fee not to exceed one hundred fifty dollars (\$150), if notice of cancellation is made through attendance at the first class session (**first day of class to "fifth classes days", or the seven days after enrollment was signed**), whichever is later.

To obtain a refund, the student must provide a written notice to:

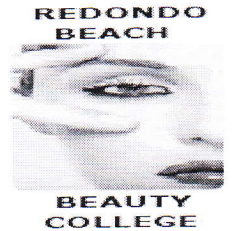
Redondo Beach Beauty College
2205 W. Artesia Blvd
Redondo Beach, CA 90278
Phone (310)370-7464
Fax (310)370-8227
Email: rbbeautycollege@yahoo.com

If the institution gave the student any equipment, the student shall return the equipment within 30 days following the date of the Notice of Cancellation. If the student fails to return the equipment within this 30 day-period, the institution may retain that portion of the consideration paid by the student equal to the documented cost to the institution of the equipment and shall refund the portion of the consideration exceeding the documented cost to the institution of the equipment within 10 days after the period within which the student is required to return the equipment. The student may retain the equipment without further obligation to pay for it.

Student's Initials: _____ Date: _____

Initial only after you have had sufficient time to read and understand the information.

REDONDO BEACH BEAUTY COLLEGE
 2205 W. ARTESIA BOULEVARD
 REDONDO BEACH, CA 90278
 Phone: (310) 370-7464 Fax: (310) 370-8227
 www.rbbeautycollege.com



SCHOOL PERFORMANCE FACT SHEET
Calendar Years 2016 & 2017

Includes data for the two calendar years prior to reporting

PROGRAM NAME: COSMETOLOGY PROGRAM LENGTH: 1600 hours 50-80 Weeks

On-Time Completion Rates: (Graduation Rates)

Calendar Year	Number of Students Who Began Program	Students Available for Graduation	Number of on-time Graduates	On-time Completion Rate
**2016	22	22	12	55%
**2017	9	9	5	55.56%

Student's Initials: _____ Date: _____
 Initial only after you have had sufficient time to read and understand the information.

150% TABLE OPTIONAL

Students Completing After within 150% of Published Program Length

Calendar Year	Number of Students Who Began Program	Students Available for Graduation	150% Graduates	150% Completion Rate
**2016	22	22	2	.09%
**2017	9	9	N/A	N/A

** Included if the program is more than one year in length.

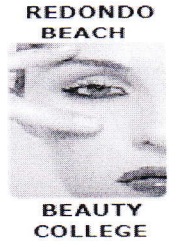
Student's Initials: _____ Date: _____
 Initial only after you have had sufficient time to read and understand the information.

REDONDO BEACH BEAUTY COLLEGE

2205 W. ARTESIA BOULEVARD
REDONDO BEACH, CA 90278

Phone: (310) 370-7464 Fax: (310) 370-8227

www.rbbeautycollege.com



Job Placement Rates (includes data for the two calendar years prior to reporting)

Calendar Year	Number of Student Who Began Program	Number of Graduate	Graduates Available for Employment	Graduates Employed in the Field	Placement Rate Employed in the Field
**2016	22	14	14	9	64%
**2017	9	5	5	3	60%

You may obtain from the institution a list of the employment positions determined to be in the field for which a student received education and training. **Please see below**

***39-5012 Hairdressers, Hairstylists, and Cosmetologists:** Provide beauty services, such as shampooing, cutting, coloring, and styling hair, and massaging and treating scalp. May apply makeup, dress wigs, perform hair removal, and provide nail and skin care services.

First Quarter of 2017	Median Hourly	Median Annually
Los Angeles	\$12.53	\$26,065

The US Department of Labor, Bureau of Statistics has provided us with the salary/wage information or persons employed in our programs.

You may obtain a list of the employment positions determined to be within the field that the education received in this program will prepare you for, a list of the source of information used to substantiate the above salary disclosure, and a description of the manner in which the figures provided above have been calculated from the Admissions & Placement Office or visit www.labormarketinfo.edd.ca.gov

Gainful Employment Categories (includes data for the two calendar years prior to reporting)

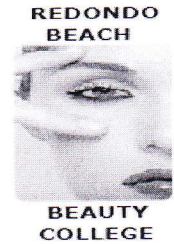
Part Time vs. Full Time Employment

Calendar Year	“Part-Time” Graduates Employed in the field 20 to 29 hours per week	“Full-Time” Graduates Employed in at least 30 hours per week	Total Graduates Employed in the Field
**2016	7	2	9
**2017	3	0	3

Student's Initials: _____ Date: _____

Initial only after you have had sufficient time to read and understand the information.

REDONDO BEACH BEAUTY COLLEGE
 2205 W. ARTESIA BOULEVARD
 REDONDO BEACH, CA 90278
 Phone: (310) 370-7464 Fax: (310) 370-8227
 www.rbbeautycollege.com



Single Position vs. Concurrent Aggregated Positions

Calendar Year	Graduates Employed in the field in the single position	Graduates Employed in the field in concurrent aggregated positions	Total Graduates Employed in the Field
**2016	9	N/A	9
**2017	3	N/A	3

Self-Employed/Freelance Positions

Calendar Year	Graduates Employed who are self-employed or working freelance	Total Graduates Employed in the Field
**2016	N/A	N/A
**2017	N/A	N/A

Institutional Employment

Calendar Year	Graduates Employed in the field who are employed by the institution, an employer owned by the institution, or an employer who shares ownership with the institution	Total Graduates Employed in the Field
**2016	N/A	N/A
**2017	N/A	N/A

Student's Initials: _____ **Date:** _____

Initial only after you have had sufficient time to read and understand the information.

IF the majority of graduates from this program obtain jobs in self-employment or freelance work add:

This program may result in freelance or self-employment.

- The work available to graduates of this program is usually for freelance or self-employment.
- This type of work may not be consistent.
- The period of employment can range from one day to weeks to several months.
- Hours worked in a day or week may be more or less than the traditional 8 hour work day or 40 hour work week.
- You can expect to spend unpaid time expanding your networks, advertising, promoting your services, or honing your skills.
- Once graduates begin to work freelance or are self-employed, they will be asked to provide documentation that they are employed as such so that they may be counted as placed for our job placement records.
- Students initialing this disclosure understand that either a majority or all of this school's graduates are employed in this manner and understand what comprises this work style.

Student's Initials: _____ **Date:** _____

Only initial after you have had sufficient time to read and understand the information.

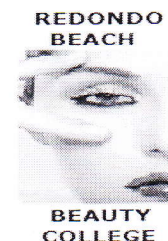
REDONDO BEACH BEAUTY COLLEGE

2205 W. ARTESIA BOULEVARD

REDONDO BEACH, CA 90278

Phone: (310) 370-7464 Fax: (310) 370-8227

www.rbbeautycollege.com



License Examination Passage Rates (includes data for the two calendar years prior to reporting)

Calendar Year	Number of Graduates in Calendar Year	Number of Graduates Taking Exam	Number Who Passed First Available Exam	Number Who Failed First Available Exam	Passage Rate
**2016	14	12	10	2	83%
**2017	9	5	0	5	0%

Licensure examination passage data is available from the state agency administering the examination and also in student file.

Student's Initials: _____ Date: _____

Initial only after you have had sufficient time to read and understand the information.

Salary and Wage Information (includes data for the two calendar years prior to reporting)

Annual Salary and Wages Reported for Graduates Employed in the Field

Calendar Year	Graduates Available for Employment	Graduates Employed in Field	\$5,000-\$10,000	\$10,001-\$15,000	\$25,001-30,000	\$30,001-\$35,001	No Salary Information Reported
**2016	14	9	N/A	N/A	N/A	N/A	N/A
**2017	5	3	2	1	N/A	N/A	N/A

A list of sources used to substantiate salary disclosures is available from the school. (Insert how student can obtain this information.)

Student's Initials: _____ Date: _____

Initial only after you have had sufficient time to read and understand the information.

Cost of Educational Program

Total charges for the program for students completing on-time in 2017: **\$12,950.00** Additional charges may be incurred if the program is not completed on-time.

Student's Initials: _____ Date: _____

Initial only after you have had sufficient time to read and understand the information.

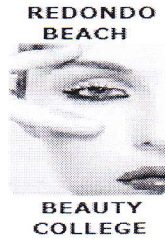
REDONDO BEACH BEAUTY COLLEGE

2205 W. ARTESIA BOULEVARD

REDONDO BEACH, CA 90278

Phone: (310) 370-7464 Fax: (310) 370-8227

www.rbbeautycollege.com



License Examination Passage Rates (includes data for the two calendar years prior to reporting)

Calendar Year	Number of Graduates in Calendar Year	Number of Graduates Taking Exam	Number Who Passed First Available Exam	Number Who Failed First Available Exam	Passage Rate
**2016	14	12	10	2	83%
**2017	9	5	0	5	0%

Licensure examination passage data is available from the state agency administering the examination and also in student file.

Student's Initials: _____ Date: _____

Initial only after you have had sufficient time to read and understand the information.

Salary and Wage Information(includes data for the two calendar years prior to reporting)

Annual Salary and Wages Reported for Graduates Employed in the Field

Calendar Year	Graduates Available for Employment	Graduates Employed in Field	\$5,000-\$10,000	\$10,001-\$15,000	\$25,001-30,000	\$30,001-\$35,001	No Salary Information Reported
**2016	14	9	N/A	N/A	N/A	N/A	N/A
**2017	5	3	2	1	N/A	N/A	N/A

A list of sources used to substantiate salary disclosures is available from the school. (Insert how student can obtain this information.)

Student's Initials: _____ Date: _____

Initial only after you have had sufficient time to read and understand the information.

Cost of Educational Program

Total charges for the program for students completing on-time in 2017: **\$12,950.00** Additional charges may be incurred if the program is not completed on-time.

Student's Initials: _____ Date: _____

Initial only after you have had sufficient time to read and understand the information.

REDONDO BEACH BEAUTY COLLEGE

2205 W. ARTESIA BOULEVARD

REDONDO BEACH, CA 90278

Phone: (310) 370-7464 Fax: (310) 370-8227

www.rbbeautycollege.com



Definitions

- "Number of Students Who Began the Program" means the number of students who began a program who were scheduled to complete the program within 100% of the published program length within the reporting calendar year and excludes all students who cancelled during the cancellation period.
- "Students Available for Graduation" is the number of students who began the program minus the number of students who have died, been incarcerated, or been called to active military duty.
- "Number of On-time Graduates" is the number of students who completed the program within 100% of the published program length within the reporting calendar year.
- "On-time Completion Rate" is the number of on-time graduates divided by the number of students available for graduation.
- "150% Graduates" is the number of students who completed the program within 150% of the program length (includes on-time graduates).
- "150% Completion Rate" is the number of students who completed the program in the reported calendar year within 150% of the published program length, including on-time graduates, divided by the number of students available for graduation.
- "Graduates Available for Employment" means the number of graduates minus the number of graduates unavailable for employment.
- "Graduates Unavailable for Employment" means the graduate who, after graduation, dies, become incarcerated, are called to active military duty, are international students that leave the United States or do not have a visa allowing employment in the United States, or are continuing their education in an accredited or bureau-approved postsecondary institution.
- "Graduates employed in the Field" means a graduate who beginning within six months after a student completes the applicable educational program are gainfully employed, whose employment has been reported, and for whom the institution has documented verification of employment. For occupations for which the state requires passing an examination, the six months period begins after the announcement of the examination results for the first examination available after a student completes an applicable educational program.
- "Placement Rate Employed in the Field" is calculated by dividing the number of graduates gainfully employed in the field by the number of graduates available for employment.
- "Number of Graduates Taking Exam" is the number of graduates who took the first available exam in the reported calendar year.
- "First Available Exam Date" is the date for the first available exam after a student completed a program.
- "Passage Rate" is calculated by dividing the number of graduates who passed the exam by the number of graduates who took the reported licensing exam.
- "Number Who Passed First Available Exam" is the number of graduates who took and passed the first available licensing exam after completing the program.
- "Salary" is as reported by graduate or graduate's employer.
- "No Salary Information Reported" is the number of graduates for whom, after making reasonable attempts, the school was not able to obtain salary information.

REDONDO BEACH BEAUTY COLLEGE

**2205 W. ARTESIA BOULEVARD
REDONDO BEACH, CA 90278
Phone: (310) 370-7464 Fax: (310) 370-8227
www.rbbeautycollege.com**



STUDENT'S RIGHT TO CANCEL

The student has the right to cancel the enrollment agreement and obtain a full refund of charges paid, less a reasonable deposit or registration fee not to exceed one hundred fifty dollars (\$150), if notice of cancellation is made through attendance at the first class session (**first day of class to "fifth classes days", or the seven days after enrollment was signed**), whichever is later.

To obtain a refund, the student must provide a written notice to:

**Redondo Beach Beauty College
2205 W. Artesia Blvd.,
Redondo Beach, CA 90278
Phone (310)370-7464
Fax (310)370-8227
Email: rbbeautycollege@yahoo.com**

If the institution gave the student any equipment, the student shall return the equipment within 30 days following the date of the Notice of Cancellation. If the student fails to return the equipment within this 30 day-period, the institution may retain that portion of the consideration paid by the student equal to the documented cost to the institution of the equipment and shall refund the portion of the consideration exceeding the documented cost to the institution of the equipment within 10 days after the period within which the student is required to return the equipment. The student may retain the equipment without further obligation to pay for it.

Student's Initials: _____ Date: _____

Initial only after you have had sufficient time to read and understand the information.

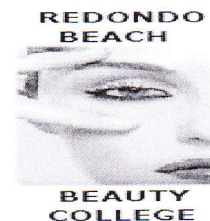
REDONDO BEACH BEAUTY COLLEGE

2205 W. ARTESIA BOULEVARD

REDONDO BEACH, CA 90278

Phone: (310) 370-7464 Fax: (310) 370-8227

www.rbbeautycollege.com



SCHOOL PERFORMANCE FACT SHEET

Calendar Years 2016 & 2017

PROGRAM NAME: ESTHETICIAN PROGRAM LENGTH: 600 hours 15-30 Weeks

On-Time Completion Rates: (Graduation Rates)

Includes data for the two calendar years prior to reporting

Calendar Year	Number of Students Who Began Program	Students Available for Graduation	Number of on-time Graduates	On-time Completion Rate
**2016	10	10	7	70%
**2017	7	7	7	100%

Student's Initials: _____ Date: _____

Initial only after you have had sufficient time to read and understand the information.

150% TABLE OPTIONAL (Program less than one year)

Students Completing After Published Program Length - 150% completion Rate (101-150%)

Calendar Year	Number of Students Who Began Program	Students Available for Graduation	150% Graduates	150% Completion Rate
**2016	10	10	2	20%
**2017	7	7	N/A	N/A

** Included if the program is more than one year in length.

Student's Initials: _____ Date: _____

Initial only after you have had sufficient time to read and understand the information.

REDONDO BEACH BEAUTY COLLEGE
2205 W. ARTESIA BOULEVARD
REDONDO BEACH, CA 90278
Phone: (310) 370-7464 Fax: (310) 370-8227
www.rbbeautycollege.com



Job Placement Rates (includes data for the two calendar years prior to reporting)

Calendar Year	Number of Student Who Began Program	Number of Graduate	Graduates Available for Employment	Graduates Employed in the Field	Placement Rate Employed in the Field
**2016	10	9	9	6	67%
**2017	7	7	7	4	57.14%

You may obtain from the institution a list of the employment positions determined to be in the field for which a student received education and training. **Please see below**

39-5094 Skincare Specialists: Provide skincare treatments to face and body to enhance an individual's appearance.

First Quarter of 2017	Median Hourly	Median Annually
Los Angeles	\$16.67	\$34.667

The US Department of Labor, Bureau of Statistics has provided us with the salary/wage information or persons employed in our programs.

You may obtain a list of the employment positions determined to be within the field that the education received in this program will prepare you for, a list of the source of information used to substantiate the above salary disclosure, and a description of the manner in which the figures provided above have been calculated from the Admissions & Placement Office visit www.labormarketinfo.edd.ca.gov

Gainful Employment Categories (includes data for the two calendar years prior to reporting)

Part Time vs. Full Time Employment

Calendar Year	"Part-Time" Graduates Employed in the field 20 to 29 hours per week	"Full-Time" Graduates Employed in at least 30 hours per week	Total Graduates Employed in the Field
**2016	6	0	6
**2017	3	1	4

Student's Initials: _____ **Date:** _____

Initial only after you have had sufficient time to read and understand the information.

REDONDO BEACH BEAUTY COLLEGE

2205 W. ARTESIA BOULEVARD

REDONDO BEACH, CA 90278

Phone: (310) 370-7464 Fax: (310) 370-8227

www.rbbeautycollege.com



Single Position vs. Concurrent Aggregated Positions

Calendar Year	Graduates Employed in the field in the single position	Graduates Employed in the field in concurrent aggregated positions	Total Graduates Employed in the Field
**2016	6	N/A	6
**2017	3	N/A	3

Self-Employed/Freelance Positions

Calendar Year	Graduates Employed who are self-employed or working freelance	Total Graduates Employed in the Field
**2016	N/A	N/A
**2017	1	N/A

Institutional Employment

Calendar Year	Graduates Employed in the field who are employed by the institution, an employer owned by the institution, or an employer who shares ownership with the institution	Total Graduates Employed in the Field
**2016	N/A	N/A
**2017	N/A	N/A

Student's Initials: _____ Date: _____

Initial only after you have had sufficient time to read and understand the information.

IF the majority of graduates from this program obtain jobs in self-employment or freelance work add:

This program may result in freelance or self-employment.

- the work available to graduates of this program is usually for freelance or self-employment.
- This type of work may not be consistent.
- The period of employment can range from one day to weeks to several months.
- Hours worked in a day or week may be more or less than the traditional 8 hour work day or 40 hour work week.
- You can expect to spend unpaid time expanding your networks, advertising, promoting your services, or honing your skills.
- Once graduates begin to work freelance or are self-employed, they will be asked to provide documentation that they are employed as such so that they may be counted as placed for our job placement records.
- Students initialing this disclosure understand that either a majority or all of this school's graduates are employed in this manner and understand what comprises this work style.

Student's Initials: _____ Date: _____

Only initial after you have had sufficient time to read and understand the information

REDONDO BEACH BEAUTY COLLEGE

2205 W. ARTESIA BOULEVARD
REDONDO BEACH, CA 90278
Phone: (310) 370-7464 Fax: (310) 370-8227
www.rbbeautycollege.com



License Examination Passage Rates (includes data for the two calendar years prior to reporting)

Calendar Year	Number of Graduates in Calendar Year	Number of Graduates Taking Exam	Number Who Passed First Available Exam	Number Who Failed First Available Exam	Passage Rate
**2016	9	8	7	1	88%
**2017	7	6	5	1	83%

Licensure examination passage data is available from the state agency administering the examination and also in student's file.

Student's Initials: _____ Date: _____

Initial only after you have had sufficient time to read and understand the information.

Salary and Wage Information(includes data for the two calendar years prior to reporting)

Annual Salary and Wages Reported for Graduates Employed in the Field

Calendar Year	Graduates Available for Employment	Graduates Employed in Field	\$10,000-\$15,000	\$15,001-\$20,000	\$20,001-30,000	\$30,001-\$35,001	No Salary Information Reported
**2016	9	6	N/A	N/A	N/A	N/A	6
**2017	7	4	2	3	N/A	N/A	N/A

A list of sources used to substantiate salary disclosures is available from the school. (Insert how student can obtain this information.)

Student's Initials: _____ Date: _____

Initial only after you have had sufficient time to read and understand the information.

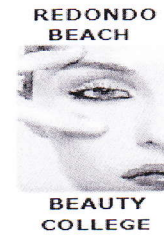
Cost of Educational Program

Total charges for the program for students completing on-time **in 2017: \$6,500.00** Additional charges may be incurred if the program is not completed on-time.

Student's Initials: _____ Date: _____

Initial only after you have had sufficient time to read and understand the information.

REDONDO BEACH BEAUTY COLLEGE
 2205 W. ARTESIA BOULEVARD
 REDONDO BEACH, CA 90278
 Phone: (310) 370-7464 Fax: (310) 370-8227
 www.rbbeautycollege.com



Federal Student Loan Debt

(A) Most recent three year cohort default rate, as reported by the United State Department of Education. School Default Rate FY 2014, 2013, and 2012 <small>Print from nslds.ed.gov 10/23/2018</small>	(B) The percentage of enrolled students in 2017 receiving federal student loans to pay for this program.	© The average amount of federal student loan debt of 2017 graduates who took out federal student loans at this institution.	(D) The percentage of graduates in 2017 who took out federal student loans to pay for this Education. Program.
0%	42%	\$9,768	100%

The percentage of students who defaulted on their federal student loans is called the Cohort Default Rate (CDR). It shows the percentage of this school's students who were more than 270 days (9 months) behind on their federal student loans within three years of when the first payment was due. This is the most recent CDR reported by the U.S. Department of Education.

Student's Initials: _____ **Date:** _____

Initial only after you have had sufficient time to read and understand the information.

This fact sheet is filed with the Bureau for Private Postsecondary Education. Regardless of any information you may have relating to completion rates, placement rates, starting salaries, or license exam passage rates, this fact sheet contains the information as calculated pursuant to state law.

Any questions a student may have regarding this fact sheet that have not been satisfactorily answered by the institution may be directed to the Bureau for Private Postsecondary Education at 2535 Capitol Oaks Drive, Suite 400, Sacramento, CA 95833, www.bppe.ca.gov, toll-free telephone number (888) 370-7589 or by fax (916) 263-1897.

Student Name-Print

Student Signature

Date

School Official

Date

REDONDO BEACH BEAUTY COLLEGE

2205 W. ARTESIA BOULEVARD

REDONDO BEACH, CA 90278

Phone: (310) 370-7464 Fax: (310) 370-8227

www.rbbeautycollege.com



Definitions

- "Number of Students Who Began the Program" means the number of students who began a program who were scheduled to complete the program within 100% of the published program length within the reporting calendar year and excludes all students who cancelled during the cancellation period.
- "Students Available for Graduation" is the number of students who began the program minus the number of students who have died, been incarcerated, or been called to active military duty.
- "Number of On-time Graduates" is the number of students who completed the program within 100% of the published program length within the reporting calendar year.
- "On-time Completion Rate" is the number of on-time graduates divided by the number of students available for graduation.
- "150% Graduates" is the number of students who completed the program within 150% of the program length (includes on-time graduates).
- "150% Completion Rate" is the number of students who completed the program in the reported calendar year within 150% of the published program length, including on-time graduates, divided by the number of students available for graduation.
- "Graduates Available for Employment" means the number of graduates minus the number of graduates unavailable for employment.
- "Graduates Unavailable for Employment" means the graduate who, after graduation, dies, become incarcerated, are called to active military duty, are international students that leave the United States or do not have a visa allowing employment in the United States, or are continuing their education in an accredited or bureau-approved postsecondary institution.
- "Graduates employed in the Field" means a graduate who beginning within six months after a student completes the applicable educational program are gainfully employed, whose employment has been reported, and for whom the institution has documented verification of employment. For occupations for which the state requires passing an examination, the six months period begins after the announcement of the examination results for the first examination available after a student completes an applicable educational program.
- "Placement Rate Employed in the Field" is calculated by dividing the number of graduates gainfully employed in the field by the number of graduates available for employment.
- "Number of Graduates Taking Exam" is the number of graduates who took the first available exam in the reported calendar year.
- "First Available Exam Date" is the date for the first available exam after a student completed a program.
- "Passage Rate" is calculated by dividing the number of graduates who passed the exam by the number of graduates who took the reported licensing exam.
- "Number Who Passed First Available Exam" is the number of graduates who took and passed the first available licensing exam after completing the program.
- "Salary" is as reported by graduate or graduate's employer.
- "No Salary Information Reported" is the number of graduates for whom, after making reasonable attempts, the school was not able to obtain salary information.

REDONDO BEACH BEAUTY COLLEGE

2205 W. ARTESIA BOULEVARD

REDONDO BEACH, CA 90278

Phone: (310) 370-7464 Fax: (310) 370-8227

www.rbbeautycollege.com



STUDENT'S RIGHT TO CANCEL

The student has the right to cancel the enrollment agreement and obtain a full refund of charges paid, less a reasonable deposit or registration fee not to exceed one hundred fifty dollars (\$150), if notice of cancellation is made through attendance at the first class session (**first day of class to "fifth classes days", or the seven days after enrollment was signed**), whichever is later.

To obtain a refund, the student must provide a written notice to:

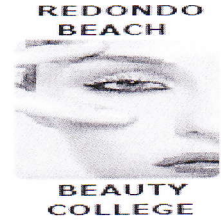
**Redondo Beach Beauty College,
2205 W. Artesia Blvd.,
Redondo Beach, CA 90278.
Phone (310)370-7464
Fax (310)370-8227
Email: rbbeautycollege@yahoo.com**

If the institution gave the student any equipment, the student shall return the equipment within 30 days following the date of the Notice of Cancellation. If the student fails to return the equipment within this 30 day-period, the institution may retain that portion of the consideration paid by the student equal to the documented cost to the institution of the equipment and shall refund the portion of the consideration exceeding the documented cost to the institution of the equipment within 10 days after the period within which the student is required to return the equipment. The student may retain the equipment without further obligation to pay for it.

Student's Initials: _____ Date: _____

Initial only after you have had sufficient time to read and understand the information.

REDONDO BEACH BEAUTY COLLEGE
 2205 W. ARTESIA BOULEVARD
 REDONDO BEACH, CA 90278
 Phone: (310) 370-7464 Fax: (310) 370-8227
 www.rbbeautycollege.com



SCHOOL PERFORMANCE FACT SHEET
Calendar Years 2016 & 2017

Includes data for the two calendar years prior to reporting

PROGRAM NAME: MANICURING **PROGRAM LENGTH: 400 hours 10-20 Weeks**

On-Time Completion Rates: (Graduation Rates)

Calendar Year	Number of Students Who Began Program	Students Available for Graduation	Number of on-time Graduates	On-time Completion Rate
**2016	26	26	23	88%
**2017	24	24	24	100%

Student's Initials: _____ Date: _____
 Initial only after you have had sufficient time to read and understand the information.

150% TABLE OPTIONAL (Program less than one year)

Students Completing After within 150% of Published Program Length

Calendar Year	Number of Students Who Began Program after within 150%	Students Available for Graduation	150% Graduates	150% Completion Rate
**2016	26	26	2	.08%
**2017	24	24	N/A	N/A

** Included if the program is more than one year in length.

Student's Initials: _____ Date: _____
 Initial only after you have had sufficient time to read and understand the information.

REDONDO BEACH BEAUTY COLLEGE

2205 W. ARTESIA BOULEVARD

REDONDO BEACH, CA 90278

Phone: (310) 370-7464 Fax: (310) 370-8227

www.rbbeautycollege.com



Job Placement Rates (includes data for the two calendar years prior to reporting)

Calendar Year	Number of Student Who Began Program	Number of Graduate	Graduates Available for Employment	Graduates Employed in the Field	Placement Rate Employed in the Field
**2016	31	31	31	20	65%
**2017	24	24	24	16	66.67%

You may obtain from the institution a list of the employment positions determined to be in the field for which a student received education and training. **Please see below**

39-5092 Manicurists and Pedicurists: Clean and shape customers' fingernails and toenails. May polish or decorate nails.

First Quarter of 2017	Median Hourly	Median Annually
Los Angeles	\$11.41	\$23,748

The US Department of Labor, Bureau of Statistics has provided us with the salary/wage information of persons employed in our programs.

You may obtain a list of the employment positions determined to be within the field that the education received in this program will prepare you for, a list of the source of information used to substantiate the above salary disclosure, and a description of the manner in which the figures provided above have been calculated from the Admissions & Placement Office or visit www.labormarketinfo.edd.ca.gov

Gainful Employment Categories (includes data for the two calendar years prior to reporting)

Part Time vs. Full Time Employment

Calendar Year	"Part-Time" Graduates Employed in the field 20 to 29 hours per week	"Full-Time" Graduates Employed in at least 30 hours per week	Total Graduates Employed in the Field
**2016	14	6	20
**2017	9	7	16

Student's Initials: _____ Date: _____

Initial only after you have had sufficient time to read and understand the information.

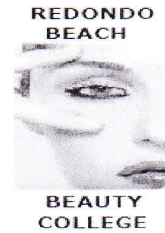
REDONDO BEACH BEAUTY COLLEGE

2205 W. ARTESIA BOULEVARD

REDONDO BEACH, CA 90278

Phone: (310) 370-7464 Fax: (310) 370-8227

www.rbbeautycollege.com



Single Position vs. Concurrent Aggregated Positions

Calendar Year	Graduates Employed in the field in the single position	Graduates Employed in the field in concurrent aggregated positions	Total Graduates Employed in the Field
**2016	20	N/A	20
**2017	16	N/A	16

Self-Employed/Freelance Positions

Calendar Year	Graduates Employed who are self-employed or working freelance	Total Graduates Employed in the Field
**2016	N/A	N/A
**2017	N/A	N/A

Institutional Employment

Calendar Year	Graduates Employed in the field who are employed by the institution, an employer owned by the institution, or an employer who shares ownership with the institution	Total Graduates Employed in the Field
**2016	N/A	N/A
**2017	N/A	N/A

Student's Initials: _____ Date: _____

Initial only after you have had sufficient time to read and understand the information.

IF the majority of graduates from this program obtain jobs in self-employment or freelance work add:

This program may result in freelance or self-employment.

- the work available to graduates of this program is usually for freelance or self-employment.
- This type of work may not be consistent.
- The period of employment can range from one day to weeks to several months.
- Hours worked in a day or week may be more or less than the traditional 8 hour work day or 40 hour work week.
- You can expect to spend unpaid time expanding your networks, advertising, promoting your services, or honing your skills.
- Once graduates begin to work freelance or are self-employed, they will be asked to provide documentation that they are employed as such so that they may be counted as placed for our job placement records.
- Students initialing this disclosure understand that either a majority or all of this school's graduates are employed in this manner and understand what comprises this work style.

Student's Initials: _____ Date: _____

Only initial after you have had sufficient time to read and understand the information.

REDONDO BEACH BEAUTY COLLEGE

2205 W. ARTESIA BOULEVARD

REDONDO BEACH, CA 90278

Phone: (310) 370-7464 Fax: (310) 370-8227

www.rbbeautycollege.com



License Examination Passage Rates (includes data for the two calendar years prior to reporting)

Calendar Year	Number of Graduates in Calendar Year	Number of Graduates Taking Exam	Number Who Passed First Available Exam	Number Who Failed First Available Exam	Passage Rate
**2016	25	24	23	1	96%
**2017	24	22	19	3	86%

Licensure examination passage data is available from the state agency administering the examination and also in student file.

Student's Initials: _____ Date: _____

Initial only after you have had sufficient time to read and understand the information.

Salary and Wage Information(includes data for the two calendar years prior to reporting)

Annual Salary and Wages Reported for Graduates Employed in the Field

Calendar Year	Graduates Available for Employment	Graduates Employed in Field	\$5,000-\$10,000	\$10,001-\$15,000	\$25,001-30,000	\$30,001-\$35,001	No Salary Info Reported
**2016	29	20	N/A	N/A	N/A	N/A	N/A
**2017	24	16	9	7	N/A	N/A	N/A

A list of sources used to substantiate salary disclosures is available from the school. (Insert how student can obtain this information.)

Student's Initials: _____ Date: _____

Initial only after you have had sufficient time to read and understand the information.

Cost of Educational Program

Total charges for the program for students completing on-time **in 2016: \$1,350.00** Additional charges may be incurred if the program is not completed on-time.

Student's Initials: _____ Date: _____

Initial only after you have had sufficient time to read and understand the information.

REDONDO BEACH BEAUTY COLLEGE
2205 W. ARTESIA BOULEVARD
REDONDO BEACH, CA 90278
Phone: (310) 370-7464 Fax: (310) 370-8227
www.rbbeautycollege.com



Federal Student Loan Debt

(A) Most recent three year cohort default rate, as reported by the United State Department of Education. School Default Rate FY 2014, 2013, and 2012 <small>Print from nslds.ed.gov 10/23/2018</small>	(B) The percentage of enrolled students in 2017 receiving federal student loans to pay for this program.	© The average amount of federal student loan debt of 2017 graduates who took out federal student loans at this institution.	(D) The percentage of graduates in 2017 who took out federal student loans to pay for this Education. Program.
N/A	N/A	N/A	N/A

The percentage of students who defaulted on their federal student loans is called the Cohort Default Rate (CDR). It shows the percentage of this school’s students who were more than 270 days (9 months) behind on their federal student loans within three years of when the first payment was due. This is the most recent CDR reported by the U.S. Department of Education.

Student’s Initials: _____ **Date:** _____

Initial only after you have had sufficient time to read and understand the information.

This fact sheet is filed with the Bureau for Private Postsecondary Education. Regardless of any information you may have relating to completion rates, placement rates, starting salaries, or license exam passage rates, this fact sheet contains the information as calculated pursuant to state law.

Any questions a student may have regarding this fact sheet that have not been satisfactorily answered by the institution may be directed to the Bureau for Private Postsecondary Education at 2535 Capitol Oaks Drive, Suite 400, Sacramento, CA 95833, www.bppe.ca.gov, toll-free telephone number (888) 370-7589 or by fax (916) 263-1897.

Student Name-Print

Student Signature

School Official

Date

Date

REDONDO BEACH BEAUTY COLLEGE

2205 W. ARTESIA BOULEVARD

REDONDO BEACH, CA 90278

Phone: (310) 370-7464 Fax: (310) 370-8227

www.rbbeautycollege.com



Definitions

- "Number of Students Who Began the Program" means the number of students who began a program who were scheduled to complete the program within 100% of the published program length within the reporting calendar year and excludes all students who cancelled during the cancellation period.
- "Students Available for Graduation" is the number of students who began the program minus the number of students who have died, been incarcerated, or been called to active military duty.
- "Number of On-time Graduates" is the number of students who completed the program within 100% of the published program length within the reporting calendar year.
- "On-time Completion Rate" is the number of on-time graduates divided by the number of students available for graduation.
- "150% Graduates" is the number of students who completed the program within 150% of the program length (includes on-time graduates).
- "150% Completion Rate" is the number of students who completed the program in the reported calendar year within 150% of the published program length, including on-time graduates, divided by the number of students available for graduation.
- "Graduates Available for Employment" means the number of graduates minus the number of graduates unavailable for employment.
- "Graduates Unavailable for Employment" means the graduate who, after graduation, dies, become incarcerated, are called to active military duty, are international students that leave the United States or do not have a visa allowing employment in the United States, or are continuing their education in an accredited or bureau-approved postsecondary institution.
- "Graduates employed in the Field" means a graduate who beginning within six months after a student completes the applicable educational program are gainfully employed, whose employment has been reported, and for whom the institution has documented verification of employment. For occupations for which the state requires passing an examination, the six months period begins after the announcement of the examination results for the first examination available after a student completes an applicable educational program.
- "Placement Rate Employed in the Field" is calculated by dividing the number of graduates gainfully employed in the field by the number of graduates available for employment.
- "Number of Graduates Taking Exam" is the number of graduates who took the first available exam in the reported calendar year.
- "First Available Exam Date" is the date for the first available exam after a student completed a program.
- "Passage Rate" is calculated by dividing the number of graduates who passed the exam by the number of graduates who took the reported licensing exam.
- "Number Who Passed First Available Exam" is the number of graduates who took and passed the first available licensing exam after completing the program.
- "Salary" is as reported by graduate or graduate's employer.
- "No Salary Information Reported" is the number of graduates for whom, after making reasonable attempts, the school was not able to obtain salary information.

REDONDO BEACH BEAUTY COLLEGE

2205 W. ARTESIA BOULEVARD

REDONDO BEACH, CA 90278

Phone: (310) 370-7464 Fax: (310) 370-8227

www.rbbeautycollege.com



STUDENT'S RIGHT TO CANCEL

The student has the right to cancel the enrollment agreement and obtain a full refund of charges paid, less a reasonable deposit or registration fee not to exceed one hundred fifty dollars (\$150), if notice of cancellation is made through attendance at the first class session (**first day of class to "fifth classes days", or the seven days after enrollment was signed**), whichever is later.

To obtain a refund, the student must provide a written notice to:

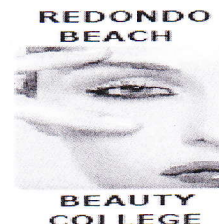
**Redondo Beach Beauty College
2205 W. Artesia Blvd
Redondo Beach, CA 90278
Phone (310)370-7464
Fax (310)370-8227
Email: rbbeautycollege@yahoo.com**

If the institution gave the student any equipment, the student shall return the equipment within 30 days following the date of the Notice of Cancellation. If the student fails to return the equipment within this 30 day-period, the institution may retain that portion of the consideration paid by the student equal to the documented cost to the institution of the equipment and shall refund the portion of the consideration exceeding the documented cost to the institution of the equipment within 10 days after the period within which the student is required to return the equipment. The student may retain the equipment without further obligation to pay for it.

Student's Initials: _____ Date: _____

Initial only after you have had sufficient time to read and understand the information.

REDONDO BEACH BEAUTY COLLEGE
 2205 W. ARTESIA BOULEVARD
 REDONDO BEACH, CA 90278
 Phone: (310) 370-7464 Fax: (310) 370-8227
 www.rbbeautycollege.com



SCHOOL PERFORMANCE FACT SHEET
Calendar Years 2016 & 2017

PROGRAM NAME: TEACHER TRAINING PROGRAM LENGTH: 600 hours 15-30 Weeks

On-Time Completion Rates: (Graduation Rates)

Includes data for the two calendar years prior to reporting

Calendar Year	Number of Students Who Began Program	Students Available for Graduation	Number of on-time Graduates	On-time Completion Rate
**2016	N/A	N/A	N/A	N/A
**2017	N/A	N/A	N/A	N/A

Student's Initials: _____ Date: _____
 Initial only after you have had sufficient time to read and understand the information.

150% TABLE OPTIONAL (Program less than one year)

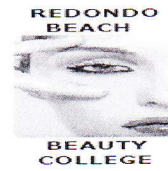
Students Completing After within 150% of Published Program Length

Calendar Year	Number of Students Who Began Program	Students Available for Graduation	150% Graduates	150% Completion Rate
**2016	N/A	N/A	N/A	N/A
**2017	N/A	N/A	N/A	N/A

** Included if the program is more than one year in length.

Student's Initials: _____ Date: _____
 Initial only after you have had sufficient time to read and understand the information.

REDONDO BEACH BEAUTY COLLEGE
2205 W. ARTESIA BOULEVARD
REDONDO BEACH, CA 90278
Phone: (310) 370-7464 Fax: (310) 370-8227
www.rbbeautycollege.com



Job Placement Rates (includes data for the two calendar years prior to reporting)

Calendar Year	Number of Student Who Began Program	Number of Graduate	Graduates Available for Employment	Graduates Employed in the Field	Placement Rate Employed in the Field
**2016	N/A	N/A	N/A	N/A	N/A
**2017	N/A	N/A	N/A	N/A	N/A

You may obtain from the institution a list of the employment positions determined to be in the field for which a student received education and training. **(Insert how student can obtain this information.)** Please see below **25-1194 Vocational Education Teachers, Postsecondary**: Teach or instruct vocational or occupational subjects at the postsecondary level (but at less than the baccalaureate) to students who have graduated or left high school. Includes correspondence school instructors; industrial, commercial, and government training instructors; and adult education teachers and instructors who prepare persons to operate industrial machinery and equipment and transportation and communications equipment. Teaching may take place in public or private schools whose primary business is education or in a school associated with an organization whose primary business is other than education.

Illustrative examples: *Mechanical Maintenance Instructor, Cosmetology Professor, Barbering Instructor*

Annual Wages for 2016	Median Hourly	Median Annually
Los Angeles	\$27.53	\$57,258

The US Department of Labor, Bureau of Statistics has provided us with the salary/wage information on persons employed in our programs.

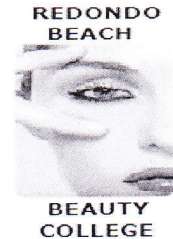
You may obtain a list of the employment positions determined to be within the field that the education received in this program will prepare you for, a list of the source of information used to substantiate the above salary disclosure, and a description of the manner in which the figures provided above have been calculated from the Admissions & Placement Office or visit www.labormarketinfo.edd.ca.gov

Gainful Employment Categories (includes data for the two calendar years prior to reporting)
Part Time vs. Full Time Employment

Calendar Year	"Part-Time" Graduates Employed in the field 20 to 29 hours per week	"Full-Time" Graduates Employed in at least 30 hours per week	Total Graduates Employed in the Field
**2016	N/A	N/A	N/A
**2017	N/A	N/A	N/A

Student's Initials: _____ **Date:** _____
Initial only after you have had sufficient time to read and understand the information.\)

REDONDO BEACH BEAUTY COLLEGE
2205 W. ARTESIA BOULEVARD
REDONDO BEACH, CA 90278
Phone: (310) 370-7464 Fax: (310) 370-8227
www.rbbeautycollege.com



Single Position vs. Concurrent Aggregated Positions

Calendar Year	Graduates Employed in the field in the single position	Graduates Employed in the field in concurrent aggregated positions	Total Graduates Employed in the Field
**2016	N/A	N/A	N/A
**2017	N/A	N/A	N/A

Self-Employed/Freelance Positions

Calendar Year	Graduates Employed who are self-employed or working freelance	Total Graduates Employed in the Field
**2016	N/A	N/A
**2017	N/A	N/A

Institutional Employment

Calendar Year	Graduates Employed in the field who are employed by the institution, an employer owned by the institution, or an employer who shares ownership with the institution	Total Graduates Employed in the Field
**2016	N/A	N/A
**2017	N/A	N/A

Student's Initials: _____ **Date:** _____

Initial only after you have had sufficient time to read and understand the information.

IF the majority of graduates from this program obtain jobs in self-employment or freelance work add:

This program may result in freelance or self-employment.

- the work available to graduates of this program is usually for freelance or self-employment.
- This type of work may not be consistent.
- The period of employment can range from one day to weeks to several months.
- Hours worked in a day or week may be more or less than the traditional 8 hour work day or 40 hour work week.
- You can expect to spend unpaid time expanding your networks, advertising, promoting your services, or honing your skills.
- Once graduates begin to work freelance or are self-employed, they will be asked to provide documentation that they are employed as such so that they may be counted as placed for our job placement records.
- Students initialing this disclosure understand that either a majority or all of this school's graduates are employed in this manner and understand what comprises this work style.

Student's Initials: _____ **Date:** _____

Only initial after you have had sufficient time to read and understand the information.

REDONDO BEACH BEAUTY COLLEGE

2205 W. ARTESIA BOULEVARD

REDONDO BEACH, CA 90278

Phone: (310) 370-7464 Fax: (310) 370-8227

www.rbbeautycollege.com



License Examination Passage Rates (includes data for the two calendar years prior to reporting)

Calendar Year	Number of Graduates in Calendar Year	Number of Graduates Taking Exam	Number Who Passed First Available Exam	Number Who Failed First Available Exam	Passage Rate
**2016	N/A	N/A	N/A	N/A	N/A
**2017	N/A	N/A	N/A	N/A	N/A

Licensure examination passage data is available from the state agency administering the examination and also in student's file.

Student's Initials: _____ Date: _____

Initial only after you have had sufficient time to read and understand the information.

Salary and Wage Information(includes data for the two calendar years prior to reporting)

Annual Salary and Wages Reported for Graduates Employed in the Field

Calendar Year	Graduates Available for Employment	Graduates Employed in Field	\$15,000-\$20,000	\$20,001-\$25,000	\$25,001-30,000	\$30,001-\$35,001	No Salary Information Reported
**2016	N/A	N/A	N/A	N/A	N/A	N/A	N/A
**2017	N/A	N/A	N/A	N/A	N/A	N/A	N/A

A list of sources used to substantiate salary disclosures is available from the school. (Insert how student can obtain this information.)

Student's Initials: _____ Date: _____

Initial only after you have had sufficient time to read and understand the information.

Cost of Educational Program

Total charges for the program for students completing on-time in 2017: **\$5,450.00** Additional charges may be incurred if the program is not completed on-time.

Student's Initials: _____ Date: _____

Initial only after you have had sufficient time to read and understand the information.

REDONDO BEACH BEAUTY COLLEGE

2205 W. ARTESIA BOULEVARD

REDONDO BEACH, CA 90278

Phone: (310) 370-7464 Fax: (310) 370-8227

www.rbbeautycollege.com



Federal Student Loan Debt

(A) Most recent three year cohort default rate, as reported by the United State Department of Education. School Default Rate FY 2014, 2013, and 2012 <small>Print from nslds.ed.gov 10/23/2018</small>	(B) The percentage of enrolled students in 2017 receiving federal student loans to pay for this program.	(C) The average amount of federal student loan debt of 2017 graduates who took out federal student loans at this institution.	(D) The percentage of graduates in 2017 who took out federal student loans to pay for this Education. Program
N/A	N/A	N/A	N/A

The percentage of students who defaulted on their federal student loans is called the Cohort Default Rate (CDR). It shows the percentage of this school's students who were more than 270 days (9 months) behind on their federal student loans within three years of when the first payment was due. This is the most recent CDR reported by the U.S. Department of Education.

Student's Initials: _____ **Date:** _____

Initial only after you have had sufficient time to read and understand the information.

This fact sheet is filed with the Bureau for Private Postsecondary Education. Regardless of any information you may have relating to completion rates, placement rates, starting salaries, or license exam passage rates, this fact sheet contains the information as calculated pursuant to state law.

Any questions a student may have regarding this fact sheet that have not been satisfactorily answered by the institution may be directed to the Bureau for Private Postsecondary Education at 2535 Capitol Oaks Drive, Suite 400, Sacramento, CA 95833, www.bppe.ca.gov, toll-free telephone number (888) 370-7589 or by fax (916) 263-1897.

Student Name-Print

Student Signature

Date

School Official

Date

REDONDO BEACH BEAUTY COLLEGE

2205 W. ARTESIA BOULEVARD

REDONDO BEACH, CA 90278

Phone: (310) 370-7464 Fax: (310) 370-8227

www.rbbeautycollege.com



Definitions

- "Number of Students Who Began the Program" means the number of students who began a program who were scheduled to complete the program within 100% of the published program length within the reporting calendar year and excludes all students who cancelled during the cancellation period.
- "Students Available for Graduation" is the number of students who began the program minus the number of students who have died, been incarcerated, or been called to active military duty.
- "Number of On-time Graduates" is the number of students who completed the program within 100% of the published program length within the reporting calendar year.
- "On-time Completion Rate" is the number of on-time graduates divided by the number of students available for graduation.
- "150% Graduates" is the number of students who completed the program within 150% of the program length (includes on-time graduates).
- "150% Completion Rate" is the number of students who completed the program in the reported calendar year within 150% of the published program length, including on-time graduates, divided by the number of students available for graduation.
- "Graduates Available for Employment" means the number of graduates minus the number of graduates unavailable for employment.
- "Graduates Unavailable for Employment" means the graduate who, after graduation, dies, become incarcerated, are called to active military duty, are international students that leave the United States or do not have a visa allowing employment in the United States, or are continuing their education in an accredited or bureau-approved postsecondary institution.
- "Graduates employed in the Field" means a graduate who beginning within six months after a student completes the applicable educational program are gainfully employed, whose employment has been reported, and for whom the institution has documented verification of employment. For occupations for which the state requires passing an examination, the six months period begins after the announcement of the examination results for the first examination available after a student completes an applicable educational program.
- "Placement Rate Employed in the Field" is calculated by dividing the number of graduates gainfully employed in the field by the number of graduates available for employment.
- "Number of Graduates Taking Exam" is the number of graduates who took the first available exam in the reported calendar year.
- "First Available Exam Date" is the date for the first available exam after a student completed a program.
- "Passage Rate" is calculated by dividing the number of graduates who passed the exam by the number of graduates who took the reported licensing exam.
- "Number Who Passed First Available Exam" is the number of graduates who took and passed the first available licensing exam after completing the program.
- "Salary" is as reported by graduate or graduate's employer.
- "No Salary Information Reported" is the number of graduates for whom, after making reasonable attempts, the school was not able to obtain salary information.

REDONDO BEACH BEAUTY COLLEGE
2205 W. ARTESIA BOULEVARD
REDONDO BEACH, CA 90278
Phone: (310) 370-7464 Fax: (310) 370-8227
www.rbbeautycollege.com



STUDENT'S RIGHT TO CANCEL

The student has the right to cancel the enrollment agreement and obtain a full refund of charges paid, less a reasonable deposit or registration fee not to exceed one hundred fifty dollars (\$150), if notice of cancellation is made through attendance at the first class session (**first day of class to “fifth classes days”, or the seven days after enrollment was signed**), whichever is later.

To obtain a refund, the student must provide a written notice to:

Redondo Beach Beauty College
2205 W. Artesia Blvd
Redondo Beach, CA 90278
Phone (310)370-7464
Fax (310)370-8227
Email: rbbeautycollege@yahoo.com

If the institution gave the student any equipment, the student shall return the equipment within 30 days following the date of the Notice of Cancellation. If the student fails to return the equipment within this 30 day-period, the institution may retain that portion of the consideration paid by the student equal to the documented cost to the institution of the equipment and shall refund the portion of the consideration exceeding the documented cost to the institution of the equipment within 10 days after the period within which the student is required to return the equipment. The student may retain the equipment without further obligation to pay for it.

Student's Initials: _____ **Date:** _____

Initial only after you have had sufficient time to read and understand the information.