



D'Lacreme School of Cosmetology & Barbering
 1787 North Texas Street Fairfield, Ca 94533
 Ph (707) 427-1712 Fax (707) 427-1009 www.dlacreme.com

School Performance Fact Sheet
 2013 & 2014 Calendar Years
 Cosmetology (1,600 Hours)

On-Time Completion Rates

Calendar Year	Number of Students Who Began Program ¹	Students Available for Graduation ²	Graduates ³	Completion Rate ⁴
2013	7	7	7	100%
2014	14	12	12	86%

Students Completing After Published Program Length (101-150% Completion Rate)

Calendar Year	Number of Students Who Began Program ¹	Students Available for Graduation ²	150% Graduates ⁵	150% Completion Rate ⁶
2013	0	0	0	0
2014	0	0	0	0

Student's Initials: _____ Date: _____

Placement Rates

Calendar Year	Number of Students Who Began Program ¹	Number of Graduates ³	Graduates Available for Employment ⁷	Graduates Employed in the Field ⁸	Placement Rate Employed in the Field ⁹	Graduates Employed in the Field an average of less than 32 hours per week	Graduates Employed in the Field at least 32 hours per week
2013	7	7	5	5	71%	0	5
2014	14	12	12	11	92%	0	11

Students are entitled to a list of the job classifications considered to be in the field of this educational program. To obtain this list, please ask an institutional representative.

Student's Initials: _____ Date: _____

License Examination Passage Rates

Calendar Year	Number of Students Taking Exam ¹⁰	Number Who Passed First Exam Taken ¹¹	Number Who Failed First Exam Taken	Passage Rate ¹²
2013	5	5	0	100%
2014	11	11	0	100%

Student's Initials: _____ Date: _____

Salary and Wage Information

Calendar Year	Graduates Available for Employment ⁷	Graduates Employed in Field ⁸	Annual Salary and Wages Reported Graduates Employed in their Field ¹³				
			\$15,000 to \$20,000	\$20,001 to \$25,000	\$25,001 to \$30,000	\$30,001 to \$35,000	Students not Reporting Salary
2013	5	5	0	0	0	0	5
2014	11	11	0	0	0	0	11

Students are entitled to a list of the objective sources of information used to substantiate the salary disclosure. To obtain this list, please ask an institutional representative where to view this list.

Student's Initials: _____ Date: _____

This fact sheet is filed with the Bureau for Private Postsecondary Education. Regardless of any information you may have relating to completion rates, placement rates, starting salaries, or license exam passage rates, this fact sheet contains the information as calculated pursuant to state law.

Any questions a student may have regarding this fact sheet that have not been satisfactorily answered by the institution may be directed to the Bureau for Private Postsecondary Education at: P.O. Box 980818, West Sacramento, Ca 95798-0818, www.bppe.ca.gov, P: 888.370.7589 or 916.263.1897.

I have read and understand this School Performance Fact Sheet. The School Performance Fact Sheet was reviewed and discussed with a school official prior to signing an enrollment agreement.

Student Name-Print

Student Signature

Date

School Official

Date

Definitions

¹ "Number of Students Who Began Program" means the number of students who began the program who are scheduled to complete the program within the reporting calendar year, and includes all the students who remain enrolled after their cancellation period.

² "Students Available for Graduation" is the number of students who began program minus the number of students who died, been incarcerated, or been called for active military duty.

³ "Graduates" is the number of students who completed the program within 100% of the program length.

⁴ "Completion Rate" is the number of Graduates divided by the Number of Students Available for Graduation.

⁵ "150 Graduates" is the number of students who completed within 101-150% of the program length.

⁶ "150% Completion Rate" is the number of students who completed the program in the reported calendar year within 101-150% of the published program length divided by the Number of Students Available for Graduation in the published program length period.

⁷ "Graduates Available for Employment" means the number of graduates minus the number of graduates unavailable for employment. "Graduates unavailable for employment" means the graduates who, after graduation, die, become incarcerated, are called to active military duty, are international students that leave the United States or do not have a visa allowing employment in the United States, or are continuing their education in an accredited or bureau-approved postsecondary institution.

⁸ "Graduates Employed in the Field" means graduates who are gainfully employed in a single position for which the institution represents the program prepares its graduates within six months after a student completes the applicable educational program. For occupations for which the state requires passing an examination, the period of employment must begin within six months of the announcement of the examination results for the first examination available after a student completes an applicable educational program.

⁹ "Placement Rate Employed in the Field" is calculated by dividing the number of graduates gainfully employed in the field by the number of graduates available for employment.

¹⁰ "Number of Students Taking Exam" is the number of students who completed the program within 150% of the published program length and who took the exam in the reported calendar year for the first time.

¹¹ "Number Who Passed First Exam Taken" is the number of students who took and passed the licensing exam in the reported calendar year on the first attempt.

¹² "Passage Rate" is calculated by dividing the number of students who passed the exam by the number of graduates who took the reported licensing exam.



D'Lacreme School of Cosmetology & Barbering
 1787 North Texas Street Fairfield, Ca 94533
 Ph (707) 427-1712 Fax (707) 427-1009 www.dlacreme.com

**School Performance Fact Sheet
 2013 & 2014 Calendar Years
 Manicuring (400 Hours)**

On-Time Completion Rates

Calendar Year	Number of Students Who Began Program ¹	Students Available for Graduation ²	Graduates ³	Completion Rate ⁴
2013	2	2	2	100%
2014	7	7	7	100%

Students Completing After Published Program Length (101-150% Completion Rate)

Calendar Year	Number of Students Who Began Program ¹	Students Available for Graduation ²	150% Graduates ⁵	150% Completion Rate ⁶
2013	0	0	0	0
2014	0	0	0	0

Student's Initials: _____ Date: _____

Placement Rates

Calendar Year	Number of Students Who Began Program ¹	Number of Graduates ³	Graduates Available for Employment ⁷	Graduates Employed in the Field ⁸	Placement Rate Employed in the Field ⁹	Graduates Employed in the Field an average of less than 32 hours per week	Graduates Employed in the Field at least 32 hours per week
2013	2	2	2	2	100%	0	2
2014	7	7	7	7	100%	0	7

Students are entitled to a list of the job classifications considered to be in the field of this educational program. To obtain this list, please ask an institutional representative.

Student's Initials: _____ Date: _____

License Examination Passage Rates

Calendar Year	Number of Students Taking Exam ¹⁰	Number Who Passed First Exam Taken ¹¹	Number Who Failed First Exam Taken	Passage Rate ¹²
2013	2	2	0	100%
2014	6	5	1	83%

Student's Initials: _____ Date: _____

Salary and Wage Information

Calendar Year	Graduates Available for Employment ⁷	Graduates Employed in Field ⁸	Annual Salary and Wages Reported Graduates Employed in their Field ¹³				
			\$15,000 to \$20,000	\$20,001 to \$25,000	\$25,001 to \$30,000	\$30,001 to \$35,000	Students not Reporting Salary
2013	2	2	0	0	0	0	2
2014	7	7	0	0	0	0	7

Students are entitled to a list of the objective sources of information used to substantiate the salary disclosure. To obtain this list, please ask an institutional representative where to view this list.

Student's Initials: _____ Date: _____

This fact sheet is filed with the Bureau for Private Postsecondary Education. Regardless of any information you may have relating to completion rates, placement rates, starting salaries, or license exam passage rates, this fact sheet contains the information as calculated pursuant to state law.

Any questions a student may have regarding this fact sheet that have not been satisfactorily answered by the institution may be directed to the Bureau for Private Postsecondary Education at: P.O. Box 980818, West Sacramento, Ca 95798-0818, www.bppe.ca.gov, P: 888.370.7589 or 916.263.1897.

I have read and understand this School Performance Fact Sheet. The School Performance Fact Sheet was reviewed and discussed with a school official prior to signing an enrollment agreement.

Student Name-Print

Student Signature

Date

School Official

Date

Definitions

¹ "Number of Students Who Began Program" means the number of students who began the program who are scheduled to complete the program within the reporting calendar year, and includes all the students who remain enrolled after their cancellation period.

² "Students Available for Graduation" is the number of students who began program minus the number of students who died, been incarcerated, or been called for active military duty.

³ "Graduates" is the number of students who completed the program within 100% of the program length.

⁴ "Completion Rate" is the number of Graduates divided by the Number of Students Available for Graduation.

⁵ "150 Graduates" is the number of students who completed within 101-150% of the program length.

⁶ "150% Completion Rate" is the number of students who completed the program in the reported calendar year within 101-150% of the published program length divided by the Number of Students Available for Graduation in the published program length period.

⁷ "Graduates Available for Employment" means the number of graduates minus the number of graduates unavailable for employment. "Graduates unavailable for employment" means the graduates who, after graduation, die, become incarcerated, are called to active military duty, are international students that leave the United States or do not have a visa allowing employment in the United States, or are continuing their education in an accredited or bureau-approved postsecondary institution.

⁸ "Graduates Employed in the Field" means graduates who are gainfully employed in a single position for which the institution represents the program prepares its graduates within six months after a student completes the applicable educational program. For occupations for which the state requires passing an examination, the period of employment must begin within six months of the announcement of the examination results for the first examination available after a student completes an applicable educational program.

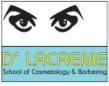
⁹ "Placement Rate Employed in the Field" is calculated by dividing the number of graduates gainfully employed in the field by the number of graduates available for employment.

¹⁰ "Number of Students Taking Exam" is the number of students who completed the program within 150% of the published program length and who took the exam in the reported calendar year for the first time.

¹¹ "Number Who Passed First Exam Taken" is the number of students who took and passed the licensing exam in the reported calendar year on the first attempt.

¹² "Passage Rate" is calculated by dividing the number of students who passed the exam by the number of graduates who took the reported licensing exam.

¹³ "Salary" is as reported by the student. Not all graduates report salary. A list of the employers of the Graduates Employed in the Field can be obtained from the School Director.



D'Lacreme School of Cosmetology & Barbering
 1787 North Texas Street Fairfield, Ca 94533
 Ph (707) 427-1712 Fax (707) 427-1009 www.dlacreme.com

School Performance Fact Sheet
 2013 & 2014 Calendar Years
 Barbering (1,500 Hours)

On-Time Completion Rates

Calendar Year	Number of Students Who Began Program ¹	Students Available for Graduation ²	Graduates ³	Completion Rate ⁴
2013	8	8	8	100%
2014	5	5	5	100%

Students Completing After Published Program Length (101-150% Completion Rate)

Calendar Year	Number of Students Who Began Program ¹	Students Available for Graduation ²	150% Graduates ⁵	150% Completion Rate ⁶
2013	0	0	0	0
2014	0	0	0	0

Student's Initials: _____ Date: _____

Placement Rates

Calendar Year	Number of Students Who Began Program ¹	Number of Graduates ³	Graduates Available for Employment ⁷	Graduates Employed in the Field ⁸	Placement Rate Employed in the Field ⁹	Graduates Employed in the Field an average of less than 32 hours per week	Graduates Employed in the Field at least 32 hours per week
2013	8	8	8	8	100%	0	8
2014	5	5	5	3	60%	0	3

Students are entitled to a list of the job classifications considered to be in the field of this educational program. To obtain this list, please ask an institutional representative.

Student's Initials: _____ Date: _____

License Examination Passage Rates

Calendar Year	Number of Students Taking Exam ¹⁰	Number Who Passed First Exam Taken ¹¹	Number Who Failed First Exam Taken	Passage Rate ¹²
2013	5	5	0	100%
2014	4	3	1	75%

Student's Initials: _____ Date: _____

Salary and Wage Information

Calendar Year	Graduates Available for Employment ⁷	Graduates Employed in Field ⁸	Annual Salary and Wages Reported Graduates Employed in their Field ¹³				
			\$15,000 to \$20,000	\$20,001 to \$25,000	\$25,001 to \$30,000	\$30,001 to \$35,000	Students not Reporting Salary
2013	8	8	0	0	0	0	8
2014	3	3	0	0	0	0	3

Students are entitled to a list of the objective sources of information used to substantiate the salary disclosure. To obtain this list, please ask an institutional representative where to view this list.

Student's Initials: _____ Date: _____

This fact sheet is filed with the Bureau for Private Postsecondary Education. Regardless of any information you may have relating to completion rates, placement rates, starting salaries, or license exam passage rates, this fact sheet contains the information as calculated pursuant to state law.

Any questions a student may have regarding this fact sheet that have not been satisfactorily answered by the institution may be directed to the Bureau for Private Postsecondary Education at: P.O. Box 980818, West Sacramento, Ca 95798-0818, www.bppe.ca.gov, P: 888.370.7589 or 916.263.1897.

I have read and understand this School Performance Fact Sheet. The School Performance Fact Sheet was reviewed and discussed with a school official prior to signing an enrollment agreement.

Student Name-Print

Student Signature

Date

School Official

Date

Definitions

¹ "Number of Students Who Began Program" means the number of students who began the program who are scheduled to complete the program within the reporting calendar year, and includes all the students who remain enrolled after their cancellation period.

² "Students Available for Graduation" is the number of students who began program minus the number of students who died, been incarcerated, or been called for active military duty.

³ "Graduates" is the number of students who completed the program within 100% of the program length.

⁴ "Completion Rate" is the number of Graduates divided by the Number of Students Available for Graduation.

⁵ "150 Graduates" is the number of students who completed within 101-150% of the program length.

⁶ "150% Completion Rate" is the number of students who completed the program in the reported calendar year within 101-150% of the published program length divided by the Number of Students Available for Graduation in the published program length period.

⁷ "Graduates Available for Employment" means the number of graduates minus the number of graduates unavailable for employment. "Graduates unavailable for employment" means the graduates who, after graduation, die, become incarcerated, are called to active military duty, are international students that leave the United States or do not have a visa allowing employment in the United States, or are continuing their education in an accredited or bureau-approved postsecondary institution.

⁸ "Graduates Employed in the Field" means graduates who are gainfully employed in a single position for which the institution represents the program prepares its graduates within six months after a student completes the applicable educational program. For occupations for which the state requires passing an examination, the period of employment must begin within six months of the announcement of the examination results for the first examination available after a student completes an applicable educational program.

⁹ "Placement Rate Employed in the Field" is calculated by dividing the number of graduates gainfully employed in the field by the number of graduates available for employment.

¹⁰ "Number of Students Taking Exam" is the number of students who completed the program within 150% of the published program length and who took the exam in the reported calendar year for the first time.

¹¹ "Number Who Passed First Exam Taken" is the number of students who took and passed the licensing exam in the reported calendar year on the first attempt.

¹² "Passage Rate" is calculated by dividing the number of students who passed the exam by the number of graduates who took the reported licensing exam.